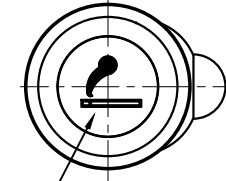
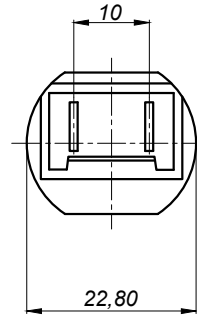
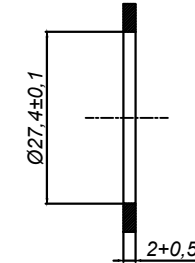


(TERMINAL DETAILS)
A - VIEW



Symbol Colour: WHITE

Panel delik çapı (>=79 ShrD
sentetik malzeme ise



Ref.Standart :9.93660 Fiat Şartnamesi

Spesifications

- ÇALIŞMA GERİLİMİ : 24V
- ÇEKİLEN AKIM : 5A MAX.
- GERİYE ATMA SÜRESİ : 10~20 Sn.
- AMPÜL : SLI 24V 1.2 W
- MUMU BİMETALE KENETLEME KUVVETİ : 15~40 N
- MUMU KILIFA SOKMA KUVVETİ : 5~30 N
- MUMU KILIFTAN ÇIKARMA KUVVETİ : 5~30 N

S. No	Part Definition	AFK S.C	Material	Quantity
3	Lamba Taşıyıcı 24V	102AB008	-	1
2	Çakmak Kılıfı 24V	101AB005	-	1
1	Çakmak Mumu 24V	103AB007	-	1

© Critical Measure

GENEL TOLERANS TABLOSU DIN 2768									
TOLERANS SINIFI	0,5 3	3 6	6 30	30 120	120 400	400 1000	1000 2000	2000 4000	4000
f	Çok Hassas ± 0,05	± 0,05	± 0,1	± 0,15	± 0,2	± 0,3	± 0,5	-	
m	Hassas ± 0,1	± 0,1	± 0,2	± 0,3	± 0,5	± 0,8	± 1,2	± 2	
c	Kaba ± 0,2	± 0,3	± 0,5	± 0,8	± 1,2	± 2	± 3	± 4	
v	Çok Kaba -	± 0,5	± 1	± 1,5	± 2,5	± 4	± 6	± 8	

Date	Name - Surname	Signature
25.10.2005	Önder DEMİR	
25.10.2005	Afşin KANDEMİR	
Scale	Part definition	
1/1.5	KOMPLE ÇAKMAK 24V	

AFK Otomotiv
Elektromekanik, Plastik
İmalat San. Tic.Ltd.Şti.

Drawing 100AA018

Material -

Non-defined Tolerances (m) Hassas

Revisions: