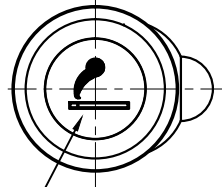
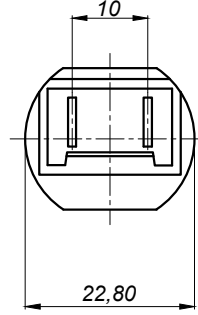


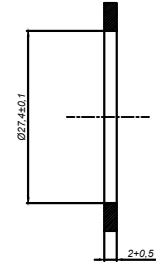
Symbol Colour: WHITE



(TERMINAL DETAILS)
A - VIEW



Panel delik çapı (>=79shrD sentetik malzeme ise



Ref.Standart :9.93660 Fiat Şartnamesi

Specifications

- ÇALIŞMA GERİLİMİ : 24V
- ÇEKİLEN AKIM : 5A MAX.
- GERİYE ATMA SÜRESİ : 10~20 Sn.
- AMPÜL : SLI 12V 1.2 W
- MUMU BİMETALE KENETLEME KUVVETİ : 15~40 N
- MUMU KILIFA SOKMA KUVVETİ : 5~30 N
- MUMU KILIFTAN ÇIKARMA KUVVETİ : 5~30 N

Revisions:

| S. No | Part Definition | AFK S.C | Material | Quantity |
|-------|--------------------|----------|----------|----------|
| 3 | Lamba Taşıyıcı 12V | 102AB001 | - | 1 |
| 2 | Çakmak Kılıfı 12V | 101AB002 | - | 1 |
| 1 | Çakmak Mumu 24V | 103AB006 | - | 1 |

© Critical Measure

| GENEL TOLERANS TABLOSU DIN 2768 | | | | | | | | | |
|------------------------------------|------------|--------|---------|-----------|------------|-------------|--------------|--------------|------|
| TOLERANS SINIFI | 0,5 3 | 3 6 | 6 30 | 30 120 | 120 400 | 400 1000 | 1000 2000 | 2000 4000 | 4000 |
| f | Çok Hassas | ± 0,05 | ± 0,05 | ± 0,1 | ± 0,15 | ± 0,2 | ± 0,3 | ± 0,5 | - |
| m | Hassas | ± 0,1 | ± 0,1 | ± 0,2 | ± 0,3 | ± 0,5 | ± 0,8 | ± 1,2 | ± 2 |
| c | Kaba | ± 0,2 | ± 0,3 | ± 0,5 | ± 0,8 | ± 1,2 | ± 2 | ± 3 | ± 4 |
| v | Çok Kaba | - | ± 0,5 | ± 1 | ± 1,5 | ± 2,5 | ± 4 | ± 6 | ± 8 |

| Drawn by | Date | Name - Surname | Signature |
|--------------------------|-----------------|----------------|-----------|
| Approved by | 25.10.2005 | Önder DEMİR | |
| Scale | 25.10.2005 | Afşin KANDEMİR | |
| 1/1.5 | Part definition | | |
| KOMPLE ÇAKMAK 24V | | | |

| | |
|--|------------|
| AFK Otomotiv Elektromekanik, Plastik İmalat San. Tic.Ltd.Şti. | |
| Drawing | 100AA016 |
| Material | - |
| Non-defined Tolerances | (m) Hassas |