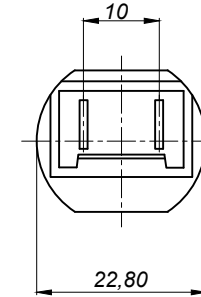


(TERMINAL DETAILS)
A - VIEW

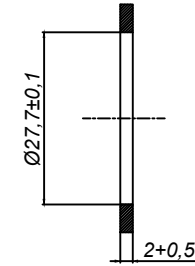


Panel delik çapı (>=79shrD sentetik malzeme ise

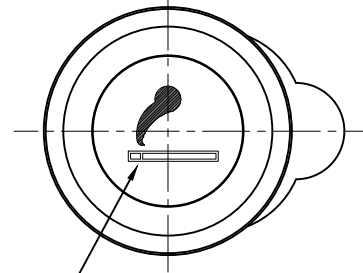
Ref. Standart :9.93660 Fiat Şartnamesi

Specifications

- ÇALIŞMA GERİLİMİ : 12V
- ÇEKİLEN AKIM : 10A MAX.
- GERİYE ATMA SÜRESİ : 10~20 Sn.
- AMPÜL : SLI 12V 1.2 W
- MUMU BİMETALE KENETLEME KUVVETİ : 15~40 N
- MUMU KILIFA SOKMA KUVVETİ : 5~30 N
- MUMU KILIFTAN ÇIKARMA KUVVETİ : 5~30 N



Revisions:



Symbol Colour: GREEN

© Critical Measure

GENEL TOLERANS TABLOSU DIN 2768								
TOLERANS SINIFI	0,5 3	3 6	6 30	30 120	120 400	400 1000	1000 2000	2000 4000
f	Çok Hassas ± 0,05	± 0,05	± 0,1	± 0,15	± 0,2	± 0,3	± 0,5	-
m	Hassas ± 0,1	± 0,1	± 0,2	± 0,3	± 0,5	± 0,8	± 1,2	± 2
c	Kaba ± 0,2	± 0,3	± 0,5	± 0,8	± 1,2	± 2	± 3	± 4
v	Çok Kaba -	± 0,5	± 1	± 1,5	± 2,5	± 4	± 6	± 8

Date	11.11.2005
Drawn by	Önder DEMİR
Approved by	11.11.2005 Afşin KANDEMİR
Scale	1/1.5

S. No	Part Definition	AFK S.C	Material	Quantity
3	Lamba Taşıyıcı 12V	102AB006	-	1
2	Çakmak Kılıfı 12V	101AB002	-	1
1	Çakmak Mumu 12V	103AB001	-	1

Date	11.11.2005
Name - Surname	Önder DEMİR
Signature	
Part definition	KOMPLE ÇAKMAK 12 V

AFK Otomotiv Elektromekanik, Plastik İmalat San. Tic.Ltd.Şti.	
Drawing	100AA006
Material	-
Non-defined Tolerances	(m) Hassas