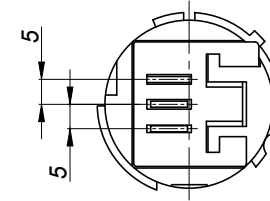
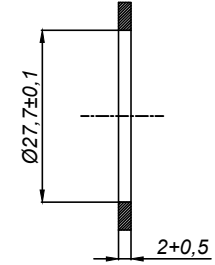


A - VIEW



Panel delik çapı (>=79shrD sentetik malzeme ise

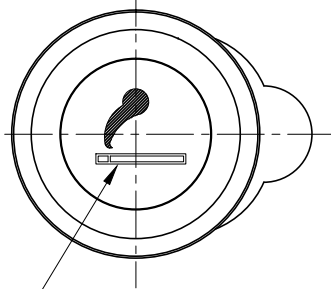


Revisions:

Ref.Standart:9.93660 Fiat Şartnamesi

Specifications

- ÇALIŞMA GERİLİMİ : 12V
- ÇEKİLEN AKIM : 10A MAX.
- GERİYE ATMA SÜRESİ : 10~20 Sn.
- AMPÜL : SLI 12V 1.2 W
- MUMU BİMETALE KENETLEME KUVVETİ : 15~40 N
- MUMU KILIFA SOKMA KUVVETİ : 5~30 N
- MUMU KILIFTAN ÇIKARMA KUVVETİ : 5~30 N



© Critical Measure

Symbol Colour: GREEN

GENEL TOLERANS TABLOSU DIN 2768									
TOLERANS SINIFI	0,5	3	6	30	120	400	1000	2000	4000
f	Çok Hassas	± 0,05	± 0,05	± 0,1	± 0,15	± 0,2	± 0,3	± 0,5	-
m	Hassas	± 0,1	± 0,1	± 0,2	± 0,3	± 0,5	± 0,8	± 1,2	± 2
c	Kaba	± 0,2	± 0,3	± 0,5	± 0,8	± 1,2	± 2	± 3	± 4
v	Çok Kaba	-	± 0,5	± 1	± 1,5	± 2,5	± 4	± 6	± 8

S. No	Part Definition	AFK S.C	Material	Quantity
3	Lamba Taşıyıcı 12V	102AB003	-	1
2	Çakmak Kılıfı 12V	101AB001	-	1
1	Çakmak Mumu 12V	103AB001	-	1

Drawn by	Date	Name - Surname	Signature
Approved by	25.10.2005	Önder DEMİR	
Scale	Part definition	KOMPLE ÇAKMAK 12V	
1/1.5			
Drawing 100AA003			
Material -			
Non-defined Tolerances (m) Hassas			

AFK Otomotiv
Elektromekanik, Plastik
İmalat San. Tic.Ltd.Şti.